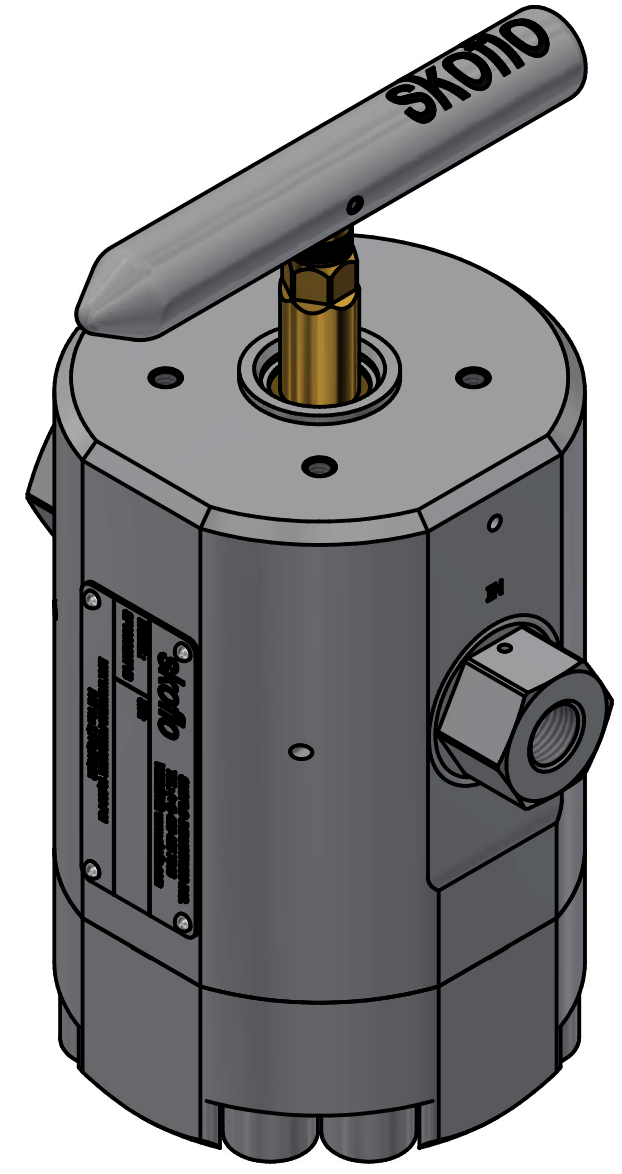
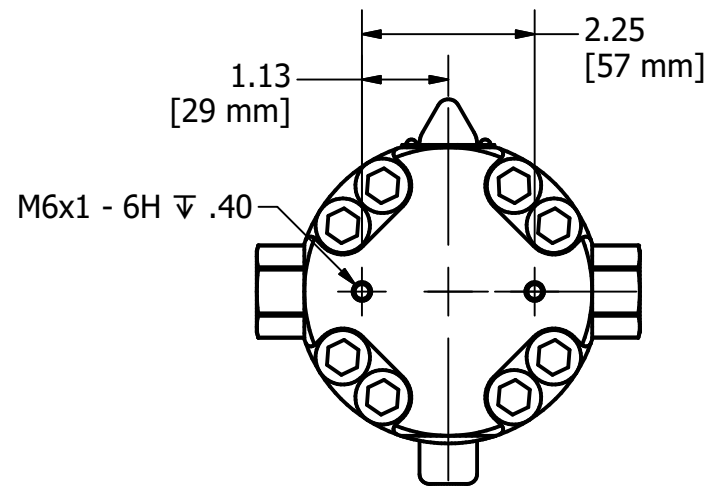
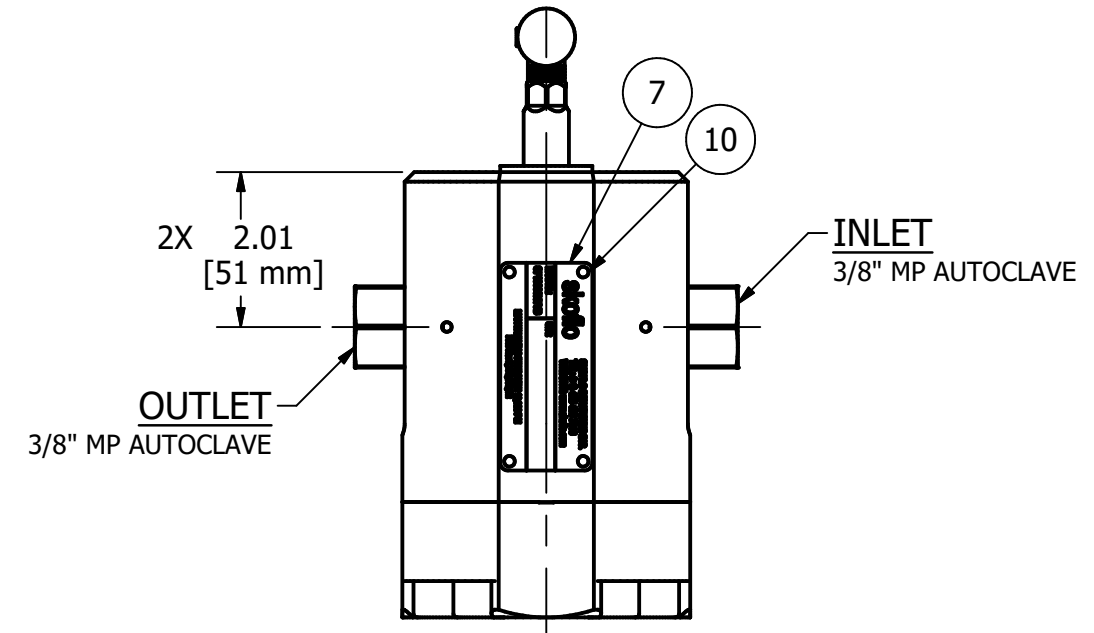
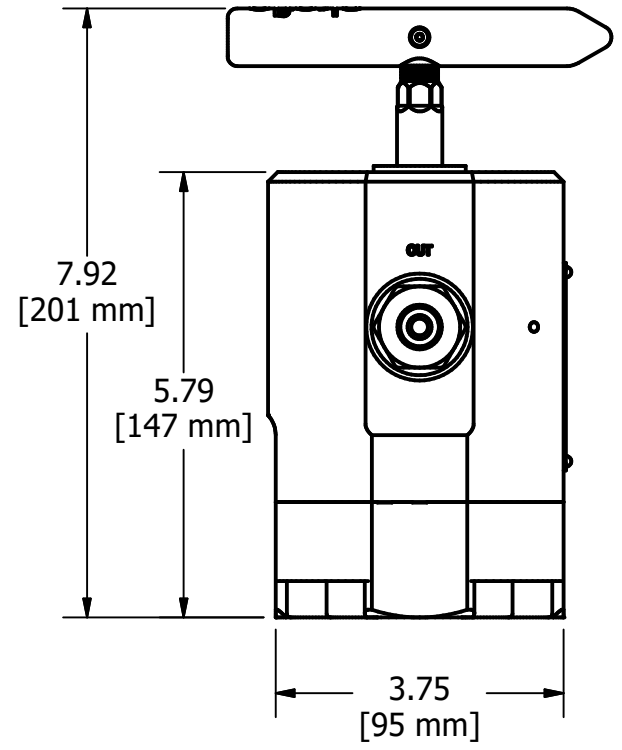
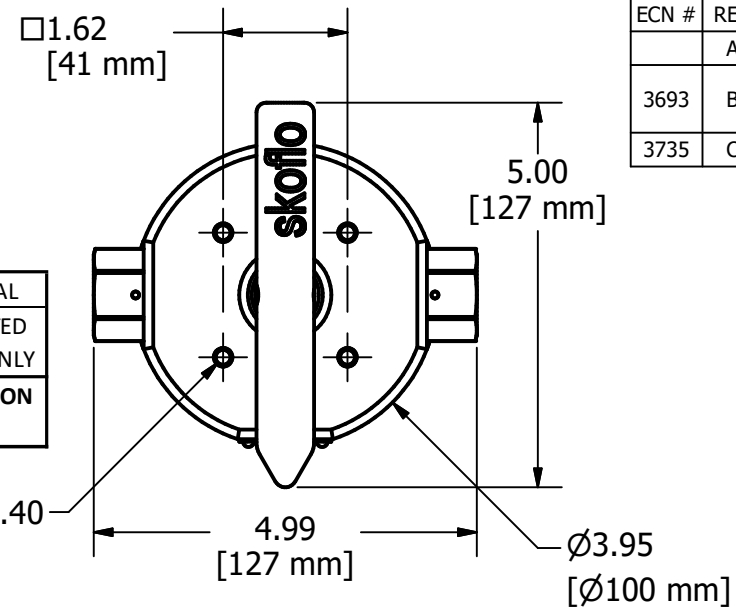



REVISION HISTORY							
ECN #	REV	DESCRIPTION	DATE	DRAWN	ENG1	ENG2	OTHER
	A	INITIAL RELEASE	4/15/22	WF	JM	MGL	
3693	B	SHT 2: 31858-X WAS 30513; 31857-X WAS 30955; ADDED KITTING NOTE; ADDED MISSING ANTISEIZE THREAD CALLOUT FLAG	3/25/23	SI	WF	JC	
3735	C	SHT 2: 31858 WAS 31858-X	7/5/23	SI	JM	JC	

CONFIGURATION NUMBER GUIDE

SF10000HTVB	-	XXXX	-	XXXX	-	1S	-	XX	-	XX	-	XX	-	XX	-	XX
0.6-600gpd		600D		FFKM				N5		NITRONIC 50 HS				MA		MANUAL
25-2500gpd		2500D		FKM				MATERIAL CODE		BODY MATERIAL				SV		ACTUATED VALVE ONLY
FLOW RANGE		FLOW CODE		EPDM										ACTUATION CODE		ACTUATION TYPE
				SEAL MATERIAL												



- NOTES:
- 1) NOMINAL WEIGHT = 20.0 lb [9.1 kg]
 - 2) RATED WORKING PRESSURE = 10,000 psi [690 bar]
 - 3) FLOW RATE RANGES:
 - a) 0.6 - 600 gpd
 - b) 25 - 2,500 gpd
 - 4) MANUAL CONFIGURATION SHOWN

ALL DIMENSIONS IN INCHES UNLESS OTHERWISE SPECIFIED	DRAWN W.FORTINER 3/15/2022	 SKOFLO INDUSTRIES, INC. WOODINVILLE, WA
DRAWING PER ANSI Y14.5M-2009	ENG1 J.MOORE 4/15/2022 ENG2 M.LELAND 4/15/2022 OTHER	
FRACTIONS ± 1/16 X ± .03 .XX ± .010 .XXX ± .005 .XXX ± .0005 ANGULAR ± 3°	UNLESS SPECIFIED DEBURR & BREAK EDGES: 0.15/005 Ra SURF. QUAL: 63 FILLETS: R.020/008 DRILL POINT: 110-150°	THIS DOCUMENT CONTAINS INFORMATION WHICH IS PROPRIETARY TO SKOFLO INDUSTRIES INC. THE INFORMATION CONTAINED HEREIN SHALL NOT BE DISCLOSED, DUPLICATED, USED IN WHOLE OR IN PART FOR ANY PURPOSE OTHER THAN TO EVALUATE THIS DOCUMENT
	DWG NO SF10000HTVB-1S-MA	REV C
	SIZE B	SCALE NONE
	SHEET 1 OF 2	