

GENERAL DESIGN FEATURES

- ▶ Designed for High Pressure Applications of 10,000 PSI
- ▶ High Pressure Stage (HPS): Multi-Stage Design for continuous operation with high pressure drops.
- ▶ Field proven design with variable orifice and pressure balanced piston
- ✓ **Maximum debris and filming tolerance** - The ceramic coated surface eliminates filming and helps prevent clogging
- ✓ **High turndown ratios**; Flows ranging from **0.6 GPD to 2500 GPD**
- ✓ Compatible sealing with most chemicals (Scale, Corrosion, Asphaltene, Wax Inhibitors, Demulsifier, Antifoam, and Methanol)
- ▶ Available with SkoFlo's automated SF3 model (combination of actuator, valve, and flowmeter packaged into one modular structure), actuator mount, or handle for manual operation
- ▶ Proven and reliable technology since 1988



HIGH PRESSURE STAGE

- ▶ SkoFlo's Multi-Stage CIMVs utilize the same primary stage design that has demonstrated reliable and accurate chemical injection for over 25 years.
- ▶ High Pressure Stage limits pressure drop across primary stage to minimize cavitation for maximum reliability
- ▶ Reliably manages a maximum intermittent pressure drop at full scale flow up to 10,000 psi and a **maximum continuous pressure drop of 6,500 psi** at full scale flow

PRESSURE-BALANCED PISTON

- ▶ **Pressure Independence** – Upstream and downstream pressure fluctuations create a net force on the patented pressure balanced piston which is countered by a spring force to maintain constant flow
- ▶ **Stable and Accurate Flow Delivery** – Pressure-balanced piston provides instantaneous means of control at different injection points from a common line that is more tolerant to debris and fluid filming. No Pneumatic or electric power sources are required for control.
- ▶ **Debris Management** – Accumulated debris results in a net force on the piston that instantly sheds the debris

SKOFLO BENEFITS

- ▶ 30-year experience, industry expert and solution provider
- ▶ Pressure Independent Valve Technology (PIVT)
- ▶ Significant chemical OPEX cost savings
- ▶ Unmatched flow delivery accuracy, proven reliability

FLOW CHARACTERISTICS

Flow Range	0.6 to 600 GPD (0.09 to 94.6 LPH)	25 to 2500 GPD (3.94 to 394.3 LPH)
Flow Delivery	Maintains set flow rate despite debris and upstream or downstream pressure fluctuations.	
Minimum Differential Pressure ¹	300 psi (21 bar) at Full Scale Flow ² [For min dP requirements at lower flow rates please consult factory]	
Flow Delivery Accuracy*	±5% of reading	

DESIGN RATINGS

Design Standards	ASME Section VIII, NACE MR0175
Design Life	25 years
Working Pressure Rating	10,000 psig (690 barg)
Proof Test Pressure	15,000 psig (1034 barg)
Operating Temperature Rating	5°F to 185°F (-15°C to 85°C)
Storage Temperature Rating	5°F to 185°F (-15°C to 85°C)
Weight ³	18 lb (8.2 Kg)

INTERFACE

Process Connection	3/8" MP Female Autoclave
Mounting	Base: 2 x M6 x 1 holes Top: 4 x M6 x 1 holes
Handle Torque	<8 ft-lb (at max rated working pressure)

MATERIALS

Chemically wetted Material	NACE MR0175 3.1 certification per EN 10204
Pressure Containing Material	3.1 certification per EN 10204
Metallic components	Nitronic 50HS, 316/316L SS, Inconel 718 and 718 silver plated, Peek, Elgiloy, Hastelloy, Carbide BC-6N
Non-metallic Material	FFKM, Graphite Filled PTFE, Ceramic, Peek
Valve Trim	Ceramic

¹ At maximum flow. For -600 maximum flow is 600 Gallons per Day, for -2500 maximum flow is 2,500 Gallons per day.

² 50% MEG in water at room temperature.

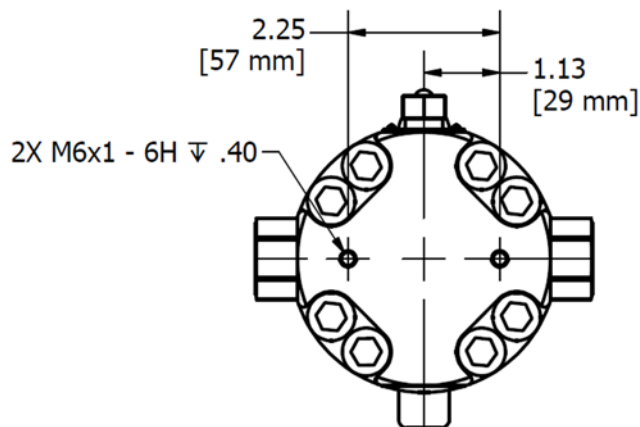
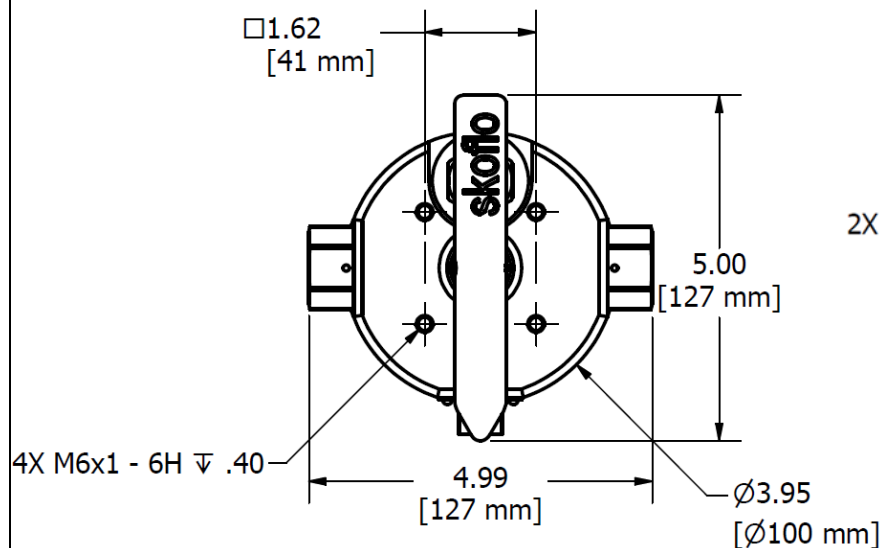
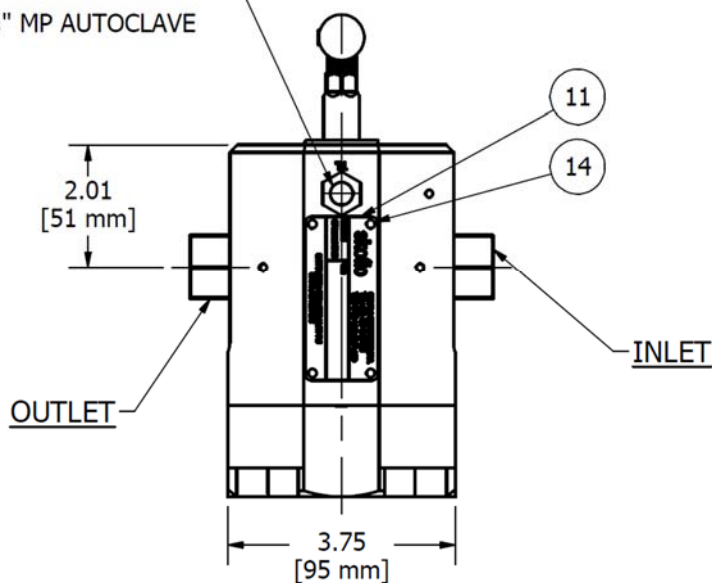
³ Weight not including an optional actuator.

*The accuracy that a CIMV delivers chemical in relation to the target/set flow rate regardless of any pressure fluctuations or debris.

CONFIGURATION NUMBER GUIDE

PRESSURE DROP REFERENCE

$\frac{3}{8}$ " MP AUTOCLAVE



Actuated Configuration

CONFIGURATION NUMBER GUIDE

SF10000HTVB		XXXX	XXXX	XX	XX	XX	XX	AT	XX	X	X	00	XX
0.6-600gpd		600D	FFKM	LH	LIGHT	3/8 MP AE		120 VAC	120	M25 X 1.5		M	AX
25-2500gpd		2500D	FKM	HH	HEAVY	HUB TYPE		208 VAC	208	3/4 - 1/4 NPT		N	EX
FLOW RANGE		FLOW CODE	EPDM	SPRING CODE	SPRING	HUB CODE		230 VAC	230	CONDUIT ENTRY SIZE		CONDUIT CODE	NA
			SEAL MATERIAL					24 VDC	DC				GO
								VOLTAGE	VOLTAGE CODE				HAZLOC CODE
													HAZLOC CERTIFICATION

