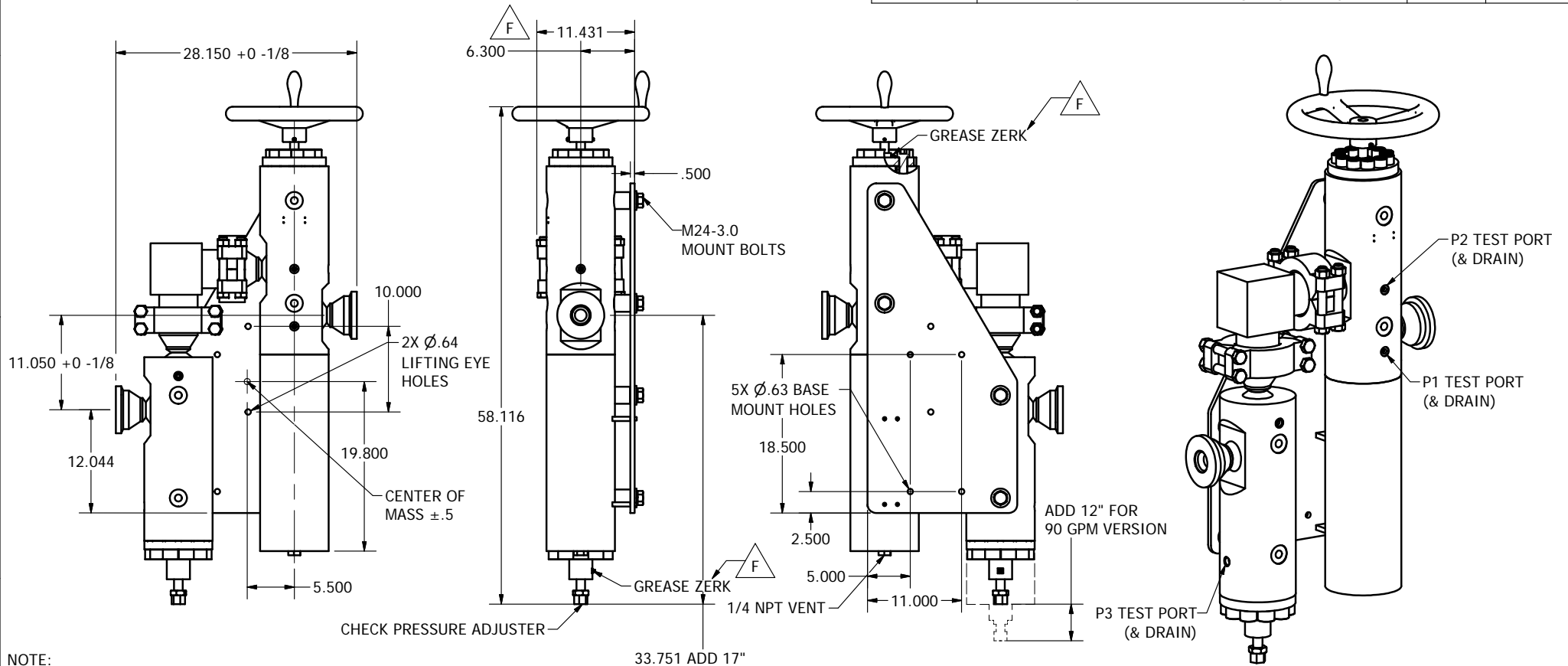


MODEL NUMBER BPR10000HFA-H3in20

REVISION HISTORY			
REV	DESCRIPTION	DATE	APPROVED
A	Initial Release	3/17/2005	MK
B	INCREASED WELD FLANGE LENGTH TO 3.5" WAS 3.0", CORRECTED TECHLOK "L" MODEL	4/7/2005	MK
C	FINALIZE HANDWHEEL DIMS	4/20/2005	MK
D	ADD MOUNT HOLE	6/23/2005	MK
E	ADD SPRING ASSY WT; CLARIFY GPM VS CHECK SECTION LENGTH	7/28/2005	MK
F	REVISED HANDWHEEL AND GREASE ZERKS	1/14/16	MK



- NOTE:
- 1) WORKING PRESSURE 10,000; HYDRO TEST TO 15,000 PSI
  - 2) WEIGHT IS 1200 LBM (WITH BASE PLATE)
  - 3) PRESSURE TEST PORTS AND DRAINS TO BE 3/8 MP AUTOCLAVE INTERFACE
  - 4) MOUNT HOLES, PRESSURE TEST PORTS AND DRAINS ARE DUPLICATED IN BOTH SIDES OF VALVE FOR INSTALLATION FLEXIBILITY
  - 5) FULL RATED FLOW 60 GPM AS SHOWN
- 33.751 ADD 17" CLEARANCE FOR DISASSEMBLY BOTH STAGES (29" FOR 90 GPM)

ALL DIMS IN INCHES UNLESS OTHERWISE SPECIFIED		DRAWN JT	3/15/2005	SKOFL0 INDUSTRIES, INC. WOODINVILLE, WA
FRACTIONS = 1/16 .X ± .03 .XX ± .010 .XXX ± .005 .XXXX ± .0005 ANGULAR ± 1°		CHECKED		
DEBURR AND BREAK EDGES .005/.015 RMS SURF QUAL 63 FILLET R .003/.015 ALL HOLES AND BORES ROUND TO .005 TIR		ENG		BPR10000HFA 2 SECTION WITH TECHLOK H3in20 PORTS OUTLINE DRAWING
THIS DOCUMENT CONTAINS INFORMATION WHICH IS PROPRIETARY TO SKOFL0 INDUSTRIES INC. THE INFORMATION CONTAINED HEREIN SHALL NOT BE DISCLOSED, DUPLICATED, USED IN WHOLE OR IN PART FOR ANY PURPOSE OTHER THAN TO EVALUATE THIS DOCUMENT				
21128 SIZE B			SHEET 1 OF 1	REV F